

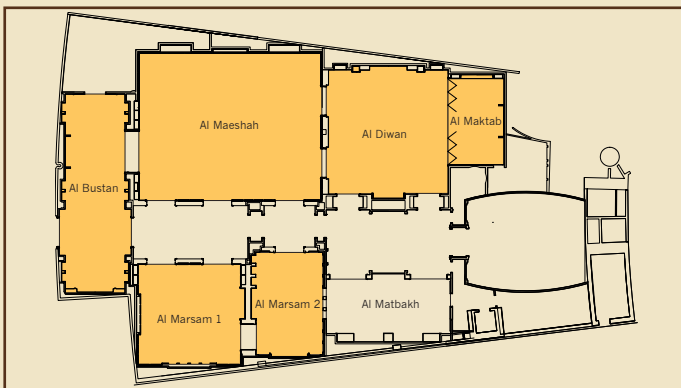


GRAND HYATT DUBAI

WELCOME A NEW WAY TO MEET, MINGLE AND MOTIVATE








Grand Hyatt Dubai redefines the ultimate event experience with Al Manzil, a brand-new residential style multi-event venue. This intimately designed space embraces the style elements of Arabic hospitality and architecture, inviting guests into “The Home” for an event with exciting possibilities. From couture cocktails to meticulous meetings, indulgent evenings to wondrous weddings, Al Manzil is exquisitely staged to exceed the highest standards of hospitality.

FLOOR PLAN



- Pioneer concept in Dubai and the region
- Perfect option for clients looking for a creative hospitality alternative to a traditional meeting space
- Collection of harmonious venues housing a unique show-break kitchen, meeting rooms, a lounge, a family room and a conservatory
- Over 600 square metres of flexible event space
- Complemented by advanced audio-visual technology
- Versatility to accommodate both corporate meetings and social galas

ROOM DIMENSIONS AND CAPACITIES

DESCRIPTION	AREA M ²	DIMENSIONS L x W x HEIGHT (M)	 THEATRE	 CLASS ROOM	 U SHAPE	 BOARD ROOM	 HOLLOW SQUARE	 BANQUET	 COCKTAIL	
AL MAKTAB										
BOARDROOM	36	7.6 x 4.7 x 3.5	—	—	—	14	—	14	—	
AL DIWAN										
LOUNGE	119	10.8 x 11 x 3.5	—	—	—	—	—	—	60	
AL MATBAKH										
THE KITCHEN	46	10.5 x 4.4 x 3.5	—	—	—	—	—	—	12	
AL MAESHAH										
FAMILY ROOM	195	15 x 13 x 3.5	120	80	26	26	30	112	150	
AL BUSTAN										
CONSERVATORY	85	16.3 x 5.2 x 3.5	—	—	—	—	—	—	40	
AL MARSAM										
DRAWING ROOM 1	66	7.5 x 8.8 x 3.5	20	12	14	14	12	36	50	
DRAWING ROOM 2	43	5 x 8.5 x 3.5	12	8	—	10	—	16	10	

For more information, please call Tel: +971 4 317 1234 or email: dubai.grand@hyatt.com